



Port of Garibaldi RV Park Rules & Regulations

606 S. Biak Ave.
Garibaldi, OR 97118
(503) 322-3292

REGISTRATION & RENT

Fees must be paid in advance. Advanced reservations are recommended and must be secured by check or credit card. A \$50.00 deposit is required to secure the campsite. We accept cash, checks or debit/credit cards with proper ID. We do not accept AMEX. There is a \$25.00 late fee added to your account on the 5th day after payment is due unless prior arrangements are made with management. Cancellations must be made at least two (2) days prior to scheduled date of arrival. No refunds due to weather or early departure.

CHECK OUT TIME: 1:00PM

Management must be notified if a late checkout is desired. Management will do its best to accommodate the guest but reserves the right to refuse or move the guest to another site.

CHECK IN TIME: 3:00PM

QUIET HOURS

10:00PM – 7:00AM. Registered guests as well as any of their guests will ensure site noise does not disturb their neighbor to include entertainment system, music, and voices. Due to noise, generators are only to be used during emergencies. Please respect your neighbors.

MAXIMUM STAY/OCCUPANCY

No more than 180 days or six (6) months in a 365 consecutive day period. No more than six (6) people may occupy or stay in an RV overnight without prior permission from RV Park Management. Stays longer than 30 days require utility statement from permanent residence. No long-term tenants. RV cannot be used as permanent dwelling (City Code 18.150, Section 010(J)).

VEHICLE LIMITATIONS

Three (3) currently registered vehicles per space allowed, this includes RV/camper. RVs must be in good working condition, within the 10-year age restriction and are subject to management's discretion. RV and/or camper exteriors must be in good clean condition. All vehicles must be self-contained, registration and insurance must be provided at check in. Drivers must present a valid driver's license when registering. Vehicles shall be capable of being removed from the park without notice. Towed vehicles/trailers shall be disconnected upon arrival at site.

SERVICE CONNECTIONS

Connections must be watertight, and park approved, complying with Oregon Health Code. Power connections in good serviceable conditions. Water pressure regulators are recommended. Guests are responsible for their equipment beyond point hookup. Waste/sewage, water or effluent from sinks, toilets or other plumbing fixtures must be deposited in dumping facility (sewer connection) only and may not be deposited directly on any pavement, dirt, gravel, or vegetation. No objects that resist water (including but not limited to facial tissue, disposable diapers, paper towels, tampons, cotton balls, coffee grounds) may be flushed or otherwise deposited into the system.

SITE MAINTENANCE

RV sites need to be kept clean of clutter. Please take caution when placing personal BBQ's or hot items on tables or benches. The installation of any structure on their site or on property is prohibited. Any accessory or equipment structure or appliance not in compliance with Park Rules and Regulations shall be removed from the property by the registered guest within five (5) days of written notice. Patio sales, moving sales, and yard sales are expressly prohibited. Management reserves the right to ask any guest to remove stored items from their site to include underneath their RV. A verbal reminder will be given by management. Three reminders will result in eviction from the park.

STORAGE

There will be a \$25 equipment charge for storage and appliances includes, but not limited to, freezers, refrigerators. No appliances, including but not limited to washing machines, clothes dryers, may be installed or placed outside of the RV at any time.



Port of Garibaldi RV Park Rules & Regulations

606 S. Biak Ave.
Garibaldi, OR 97118
(503) 322-3292

SPEED LIMIT

Please observe the 5-mph speed limit. Watch for children, pets, and wildlife. Drive on the roads only. Guests seen driving through the park clearly in excess of 5 mph will be given one verbal reminder. Three infractions will result in the guest being asked to leave the RV Park.

PARKING

Please confine parking to designated sites. No parking on street, vegetation, or vacant RV sites. Do not park in open spaces without prior office approval. Do not park or drive through the grass or where the grass is supposed to be.

VEHICLE REPAIRS

No RV and/or automobile repairs, maintenance activities or fluid changes are permitted. If any vehicle maintenance or repairs are required, please inform RV Park Management immediately. No washing of vehicles including boat and RV/trailer.

PETS

Domestic animals only in the RV Park. Aggressive pets are not allowed in the park. Pets must be on a hand-held leash any time they are outside. Everyone is expected to clean up after their pet and dispose of it properly (bagged and in the dumpster). Do not chain your pet outside or leave it unattended inside, especially if your pet tends to bark excessively or be disruptive to your neighbors. If you must leave your pet inside your trailer, please notify the office, and leave a phone number where you can be contacted in case of a power outage or another emergency. There are no pets allowed in the office, laundry room, restrooms, and any other part of the main building. Only registered Service Animals are allowed in the park buildings. If it is determined that a pet is not being cleaned up after, becomes a nuisance or is left unattended, a verbal reminder will be given by management. All pets must be up to date on vaccines with proof provided to management and kept on file.

SMOKING

No smoking is permitted inside any of the park facilities. No smoking within 10 feet of a public building or gathering.

RESTROOMS AND SHOWERS

All guests are welcome to use these facilities as long as you clean up after yourself and respect the rules. The bathrooms are cleaned with antibacterial cleaners for your protection. If there are any problems, please let us know immediately. Trash from bathroom use may be put in the bathroom trash, but please do not use these for your regular RV trash. Do not wash dishes or utensils in the bathrooms. Children are not allowed to use these facilities without adult supervision. Any damage will be the responsibility of the parent or supervising adult. Smoking is not allowed in the bathrooms or buildings.

LAUNDRY

Do not leave items unattended in the laundry facility. Any items left in the laundry room unattended will be taken out and placed into the office by management. Port of Garibaldi RV Park and its management are not responsible for any items left in the laundry room or loss/damage of clothes. Washing of pet bedding or other pet materials is not allowed in the laundry machines.

TRASH

Registered guests and/or their guests are responsible for disposal of their trash. Garbage must be bagged and must be kept inside the RV until deposited in the designated trash bins. Sizeable items such as appliances and electronics to include computers, monitors, printers, televisions, and/or radios etc. are not to be disposed of in the bins. Anyone seen dumping electronics or other forbidden items into the trash bins will pay any fee/fine charged to the RV Park for the trash and asked to leave the park permanently.

PROHIBITED ITEMS

Absolutely no use of fire pits, firearms, explosives, drugs, metal detectors or fireworks in the park.



Port of Garibaldi RV Park Rules & Regulations

606 S. Biak Ave.
Garibaldi, OR 97118
(503) 322-3292

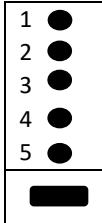
All federal, state, and local laws must be obeyed while in the park.

WIFI

POG RV

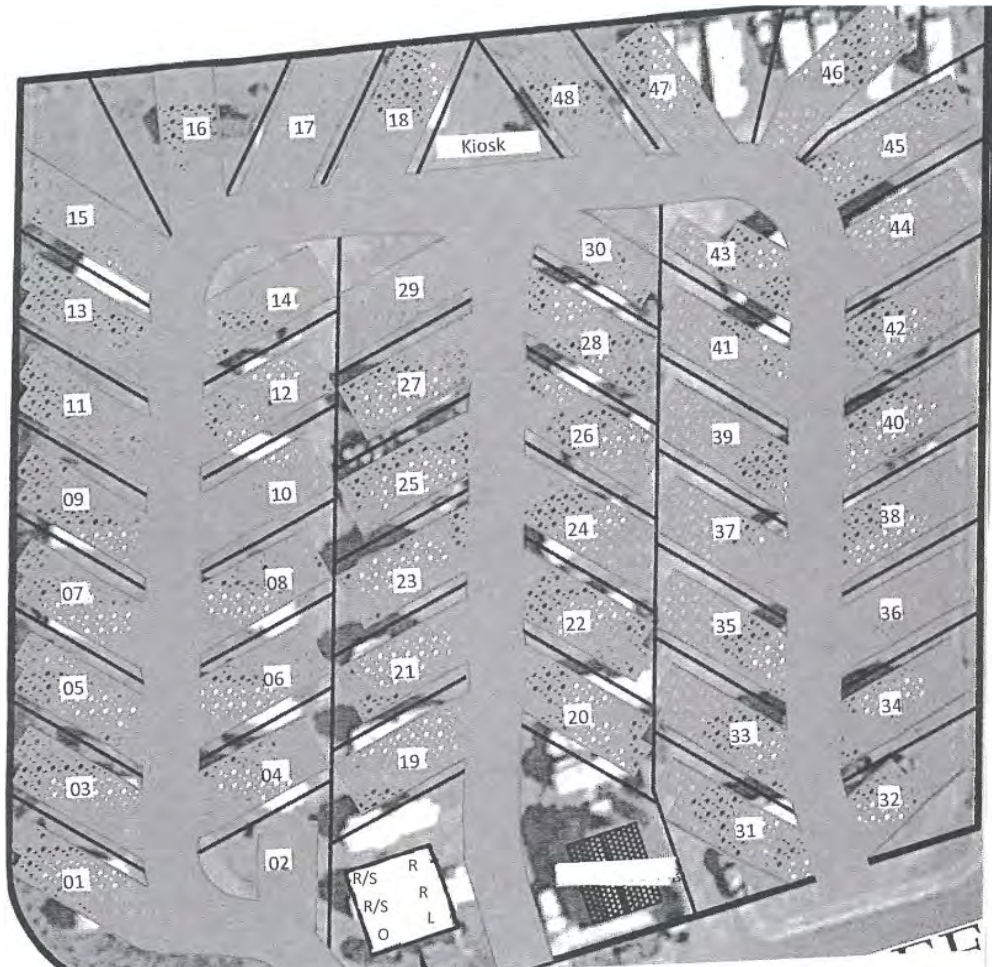
Password: 1ceb3rg2sink

Restroom/Showers/Laundry Keypad



Channel List

- Channel 2: ABC
- Channel 3: CBS
- Channel 4: NBC
- Channel 5: PBS
- Channel 6: PREVIEWS
- Channel 7: CNN
- Channel 8: HLN
- Channel 9: MAV TV
- Channel 10: HGTV
- Channel 11: FOOD NETWORK
- Channel 12: GSN
- Channel 13: AMC
- Channel 14: USA
- Channel 15: SYFY
- Channel 16: TNT
- Channel 17: TBS
- Channel 18: COMEDY CENTRAL
- Channel 19: FREEFORM
- Channel 20: DISCOVERY CHANNEL
- Channel 21:
- Channel 22: WE
- Channel 23: A&E
- Channel 24: HISTORY
- Channel 25: NATIONAL GEOGRAPHIC



O - Port Of Garibaldi RV Park Office
R/S - Restroom/Shower

R - Restroom
L - Laundry



Port of Garibaldi RV Park
Rules & Regulations

606 S. Biak Ave.
Garibaldi, OR 97118
(503) 322-3292

RATES

BASE RECREATIONAL VEHICLES

(Taxes included)

Off Season Daily	\$52
Peak Season Daily.....	\$58
Off Season Weekly	\$247
Peak Season Weekly.....	\$282
Off Season Monthly	\$652
Peak Season Monthly.....	\$770

PET FEE (first pet included, each additional charged)

Daily	\$5
Weekly	\$30
Monthly	\$50

INDIVIDUAL FEE (first four people included, each additional charged)

Daily	\$5
Weekly	\$30
Monthly	\$50

VEHICLE FEE (any combination of three axle pieces of equipment) i.e., trailer, fifth wheel, truck/car, storage trailer)

Daily	\$5
Weekly	\$30
Monthly	\$50

NON-REFUNDABLE RESERVATION FEE

Before 48 hours	\$10
After 48 hours	\$45

SERVICE FEE REIMBURSEMENT (for electric pedestal amperage overloads. First service call included in base rate. All other service reimbursements may be charged at actual cost to Port) \$75

LAUNDRY MACHINES (per load)\$2.00

HIGH TRAFFIC SURCHARGE

Garibaldi Days.....	\$19
4 th of July.....	\$16

1. Enter the combination by pressing and releasing the appropriate buttons.

2. Turn the knob to the right and push the door open.

If the door does not open, reset the lock by turning the knob to the left. Repeat steps 1 -2.

Combination: 3215